

PenTools

by Pentel

Quality Tools for Marking and Writing



CATALOGUE



PenTools

||||| by Pentel

Looking back on 75 years of company history, Pentel has every reason to be proud of the many innovations that have been launched by its own research and development department.

The Japanese Pentel brand is famous for its high-quality products and a long tradition in the business. Formed in 1946 in Tokyo, the company's head office is still located in Japan's capital city. Pentel first established a name for itself with watercolours, crayons and oil pastels, mostly aimed at the children's writing and drawing market. In the decades that followed, the portfolio was expanded, with new product ideas coming to fruition.

Today, Pentel is an international household name, and can make use of a production and supply network that stretches around the globe. The Pentel family includes products for almost any application, whether at home and school or in the office, or for industrial or workshop use, and ranges from traditional writing implements to markers and brightly coloured tools for creative minds. And Pentel increasingly aims to offer you those bright colours while keeping things environmentally friendly. Many products can therefore now be refilled and are also made using a high proportion of recycled materials.

When it comes to quality, we not only strive for perfection, we want to ensure the best possible experience for you when using our products. That's why we give you our Pentel promise: "We are always committed to the quality of our products. In the event of material and manufacturing defects, Pentel will unconditionally repair or replace any product beyond the statutory warranty period."*

*This warranty applies to all products that have been brought into circulation by Pentel GmbH, Hamburg, where the defects have occurred within the scope of normal and appropriate use. The usual ink durability, as well as technical advancements and product settings are to be considered.



PenTools

||||| by **Pentel**



QUALITY PRODUCTS FOR HIGH-FLYING PROJECTS

From writing and planning to labelling and surveying: whatever you have in mind, projects that you have left your mark on are always something special. The 'PenTools by Pentel' product range was developed to meet the needs of your individual project and its requirements. Top-quality products for writing and labelling, combined with superior durability, help manufacturers, tradespeople, the building trade and the ambitious DIYer to ensure that their projects are a complete success.



A WIDE CHOICE FOR PROFESSIONALS AND HOME USERS

The PenTools product range includes especially robust and long-lasting products that are designed to offer a helping hand for all your individual challenges. For almost any working environment and any writing surface, there's a matching, high-quality product from Pentel. This series is sure to give you the right product for demanding projects, whether on the construction site or in the home, and for materials such as metal, plastics, wood or paper – plus products for specific uses.

WHAT MAKES THEM SO SPECIAL

With products from Pentel, you are opting for reliable quality. Whether in the office, in the workshop or in the private household: working with tools that do not work as desired is annoying and time-consuming. Many markers advertise extra long writing lengths - but what's the point, if the tip is already gone after one use on a rough surface? Rely on well thought-out Pentel products with a resilient tip and helpful features.



MARKING ON SPECIAL SURFACES

The PenTools writing and marking products feature vivid, brilliant pigments offering long-term permanent results on many everyday surfaces, as well as the dirty, slightly oily, dusty or rough surfaces found in industrial production and the skilled trades. Whether you're using PenTools products in a challenging work environment or just using them to write or mark paper or cardboard, you'll benefit from a high-quality, reliable tool that offers made-to-measure support for your project.

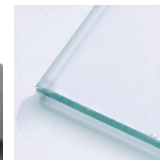
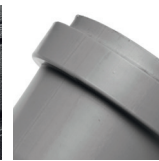


A RECOMMENDATION FROM EXPERIENCE

More than just quality, the PenTools product range is also about know-how and expertise. Benefit from Pentel's 75 years of successful business, in which it has developed and produced product after product for its customers. With millions of products sold, Pentel is one of the biggest names in writing implements worldwide. Pentel offers products for office, school, DIY, hobby and art use, as well as for industrial manufacturing and the skilled trades. The insights gained from these business segments have been used to design the products offered in the new PenTools range: a selection of recommended products from the extensive Pentel portfolio.

PenTools

||||| by **Pentel**



rubber

plastic

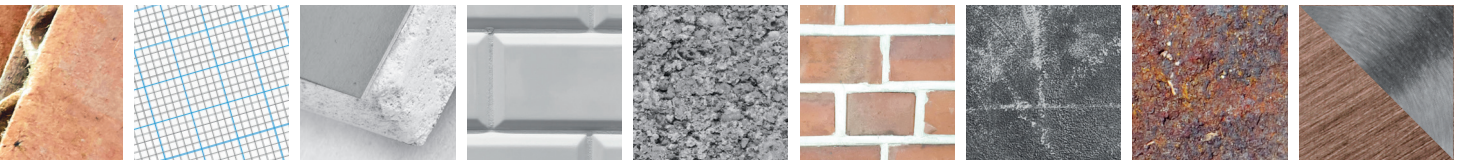
glass

wood

AM13	Automatic Pencil				●	
ENERGEL DOCUMENT	Liquid Gel-Ink					
PENTEL PEN TWIN TIP	Permanent Marker		●	●	●	
PAINT MARKER	Permanent Marker	●	●	●		
PENTEL PEN N50 / N60	Permanent Marker		●	●	●	
PENTEL PEN S / XL	Permanent Marker		●	●	●	
WHITE X100W	Permanent Marker	●	●	●	●	
WET ERASE	Glass-Marker		●	●		

WHY YOU SHOULD CHOOSE PENTTOOLS

- they are high-quality all-rounders and practical everyday helpers
- ideal for intensive use
- they are equipped with long-lasting & resilient writing tips that mark reliably even on rough surfaces
- they are usable on almost all surfaces
- they impress with strong colours, are quick-drying and low-odour
- markers in a robust aluminum housing are suitable for clamping in production machines



cardboard	paper	plasterboard	ceramic	concrete	stone	chalkboard	oily, rough surfaces	metal
●	●	●		●	●			
●	●	●						
●	●		●					●
●			●		●		●	●
●				●	●			●
●			●	●	●		●	●
				●	●		●	●
●			●			●		



AUTOMATIC PENCIL

AM13 PAGE 11

LIQUID GEL-INK

ENERGEL DOCUMENT PAGE 13

PERMANENT MARKER

PENTEL PEN TWIN TIP PAGE 15

PAINT MARKER PAGE 17

PENTEL PEN PAGE 19

PENTEL PEN S/XL PAGE 21

WHITE X100W PAGE 23

GLASS-MARKER

WET ERASE PAGE 25



AUTOMATIC PENCIL



WOOD



CONCRETE



STONE



PLASTERBOARD

Pentel AM13

graphite lead for broad lines · sliding sleeve ensures quick and precise work with straight edges and stencils · Ideal for working on dry wood, parquet, laminate flooring or on concrete, stone or plasterboard · for planning and labelling work, marking edges to cut, drill holes, etc. · [refillable with CH13 refill leads](#) · line width: 1.3 mm · hardness: HB · article number: AM13-CX

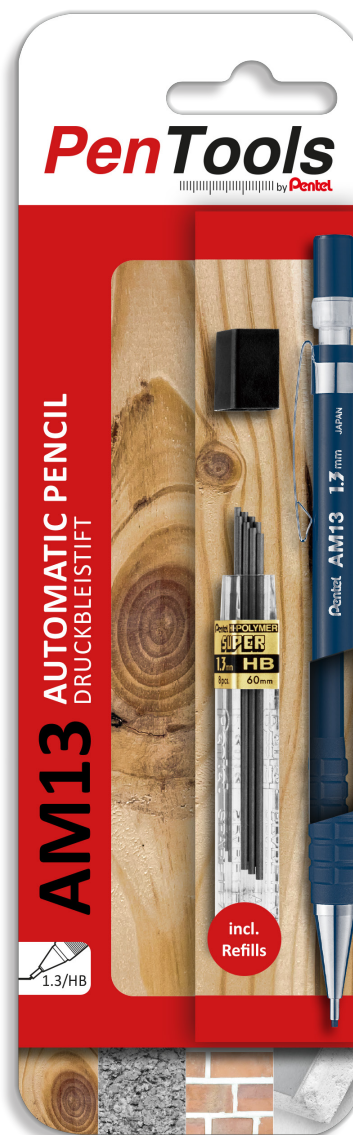


The Pentel AM13 mechanical pencil combines the advantages of a mechanical pencil with the broad line width typical in pencils for the skilled trades, including carpentry. Pencil users can rely on a precise, wide and easily visible mark at all times, without needing to waste time sharpening the lead.

The sliding sleeve is long and stable to ensure easy use with a straight edge or stencil, with the pencil tip and writing surface both staying in view to ensure optimal marking results. After use, the lead can be retracted into the mechanical pencil shaft to protect it from being accidentally snapped off. The Pentel AM13 mechanical pencil is the perfect tool for everyone – from home users to professionals.

Thanks to its extra-wide line width of 1.3 mm, the mechanical pencil is ideal for projects involving wood, concrete and stone: any marks or notes are precise and easily visible, but not permanent. The Pentel AM13 mechanical pencil also handles conventional writing and drawing tasks with ease.

Easy to work with and equipped with handy features such as a non-slip, latex-free grip zone, an eraser with a cap and a metal clip, the AM13 is an all-rounder that's just as capable for day-to-day use as it is for high-precision work with a ruler or stencil.

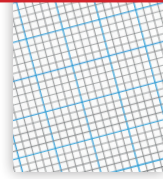


blister item code:
AM13-PRO2MP1EU

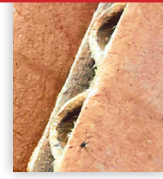
incl. 8 refills

PenTools
by Pentel





PAPER



CARDBOARD



PLASTERBOARD

LIQUID GEL-INK

ENERGEL Document

certified to ISO 27668-2 and designed for signing documents and other applications on paper intended for use as part of long-term record-keeping · pigmented, light-resistant and waterproof ink · non-erasable, acid-free ink · non-smearing, fast-drying, low-pressure pen – which means it's also perfect for left-handers · with metal clip and rubberised zone for better grip while writing · made from 54% recycled materials · refillable with LRP7 · 0.7 mm tip gives approx. a 0.35mm line width · article number: BLP77



writing colour: ●



The Pentel EnerGel Document is a rollerball liquid gel pen with pigmented, light-resistant ink. The EnerGel Document ink has been successfully certified to the ISO 27668-2 standard and is therefore specifically intended for use on documents. This makes the EnerGel Document into an essential part of the desk drawer toolkit. The ink is both waterproof and smudge-proof: in outdoor conditions, the ink is weather-resistant and will not bleed or become illegible even in drizzle or on damp paper.

The ink also has the important properties of being non-erasable and non-removable, and is also acid-resistant. This makes the rollerball gel pen the tool of choice for applications with specialised requirements – such as archive work.

The original EnerGel ink writes in brilliant colours with excellent contour sharpness, is fast-drying and does not clog up or smear on paper. The elegant, all-black casing on the rollerball liquid gel pen is fitted with a durable metal writing tip and also features a sturdy metal clip as well as a rubberised zone that offers an improved grip while writing. This product is made from 54% recycled materials and, as with most EnerGel pens, is also refillable.



blister item code:
BLP77-PRO2AEU

other colours
available

PenTools
by Pentel

FRAGILE
HANDLE
WITH CARE

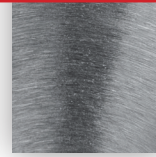




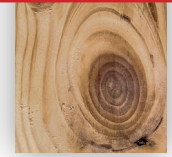
PLASTIC



CARDBOARD



METAL



WOOD

PERMANENT MARKER

Pentel PEN Twin Tip

permanent ink, highly resistant to smudging and dissolving on plastic, as well as glass, adhesive tape, heavy papers, CD/DVDs, steel and wood products · two pen tips offer a choice of line widths · fine and medium bullet tip · handy plastic barrel with cap and clip included · a practical pen for day-to-day and household use · low-odour · 0.6 mm ultra fine tip gives approx. a 0.3 mm line width · 3.5 mm bullet tip gives approx. a 1.2 mm line width · article number: N75W

writing colours:   



The Pentel Pen Twin Tip is a permanent all-purpose marker that is especially suited for use on plastics. The first of the two tips is a fine tip with a slight spring action that lets users apply more pressure to switch from an extra-fine to fine line during marking work.

The medium-sized fibre tip on the other end of the pen provides a thicker line width when precision is less important. Marking produced by the Pentel Pen Twin Tip permanent marker is exceptionally smudge-proof and waterproof, and permanent not only on many plastics but also on a wide range of other surfaces and materials in the home, such as glass, metal and wood.

With its handy standard size as well as practical cap and clip, this permanent marker is the go-to pen for day-to-day jobs needing durable marking or labelling. The ideal all-rounder marker for building services and plumbing work, it's also a versatile and useful tool for all tradespeople and DIY fans when working around the home.



blister item code:
N75W-PRO3ABCEU

also permanent and smudge-proof on coated packing tape

PenTools
by Pentel



Pentel® **PAINT MARKER** Medium bullet point
Shake well before removing cap. Press the rib down several times until paint appears on the nib. Use. Do not use on soft PVC, expanded polystyrene, nor suitable for children, highly flammable. Use in well-ventilated area. Do not store with cap removed. Press the rib down several times until paint appears on the nib. Use. Do not use on soft PVC, expanded polystyrene, nor suitable for children, highly flammable. Use in well-ventilated area. Do not store with cap removed.

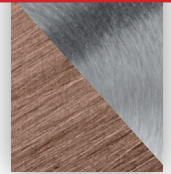
Pentel® **PAINT MARKER**



RUBBER



PLASTIC



METAL

PERMANENT PAINT MARKER

PAINT MARKER

paint marker with pigment-based ink and high opacity · high level of coverage on metallic surfaces, plastic, glass and rubber · fast-drying, waterproof even on oily, wet, dusty or greasy surfaces · lightfast and resistant to many solvents · light plastic model with cap · in 15 vibrant, pigmented colours · 4.6 mm bullet tip gives approx. a 3.0 mm line width · article number: MMP20



writing colours: ● ● ● ●



On land, in water or up in the air. Wherever and whenever a pen could be of use, the Pentel Paint Marker at your side won't let you down.

Designed with a light synthetic barrel and a long-lasting, permanent ink, Paint Markers from Pentel are waterproof, lightfast and resistant to many kinds of solvents—even in the toughest environments, including the automotive industry.

The ink in the marker offers impressively durable, hardwearing and weather-resistant marking on almost any surface typical in manufacturing or skilled trades. With high opacity, excellent colour brightness and pigmented ink in 15 vibrant colours, the Pentel Paint Marker is also ideal as a versatile outdoor marker for handicraft, hobby and garden use – as well as many kinds of creative applications.

The resistant ink and tough, medium-weight fibre tip in this marker make precise marking easy even on surfaces that may be slightly oily, dusty, wet, soiled or dark-coloured. This paint marker ink for universal use does not bleed, dries fast, and is the ideal choice for use in a wide range of quality checks and testing applications for work components. The glossy, paint-like ink adheres to any non-porous surface and offers a high level of coverage on metallic surfaces, plastic, glass and rubber.



blister item code:
MMP20-PRO4MX1EU

available in
15 colours





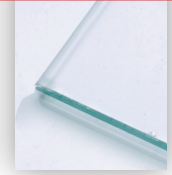
METAL



WOOD



PLASTIC



GLASS

PERMANENT MARKER

Pentel PEN

ideal for permanent marking jobs, including quality control and part marking · featuring a durable and sturdy bullet or chisel tip, which keeps its shape for a long time without fraying, perfect for use in harsh environments · robust aluminium barrel also suitable for use in machine chucks · waterproof · the no-nonsense pen for tough jobs · usable on almost any surface, including glass, metal, wood and plastics · available in up to 8 colours · 4.3 mm bullet tip N50 gives approx. a 3.0 mm line width · 4.0/5.7 mm chisel tip gives approx. a 1.5/7.0 mm line width · article number: N50/N60

blister item code:
N60-PRO4ABCEU



writing colours: ● ● ●

Permanent markers in the Pentel Pen range are high-quality all-rounders and handy day-to-day helpers for a wide range of marking and labelling tasks. The rugged marker tip is extremely hardwearing and robust, even when used on rough surfaces. The permanent markers feature an aluminium barrel in a handy, traditional marker format, making them easy and comfortable to hold for any user. The barrel is also sturdy enough for use in machine tools. Thanks to these features, the robust and long-lasting Pentel Pen is the perfect choice for day-to-day marking and labelling jobs.

is suitable for use even in harsh environments. Pentel Pens are the no-nonsense pen for universal use – from the workshop to the office, machine shop or industrial production line.



Offering impressive reliability and quality, the permanent markers in the Pentel Pen series have been part of the Pentel product range for over 60 years. The permanent ink in these pens is usable on a wide range of materials, including glass, metal, wood and plastics, and



blister item code:
N50-PRO4ABCEU

all-rounder on
almost any materials

PenTools

||||| by Pentel





METAL



WOOD



PLASTIC



GLASS

PERMANENT MARKER

Pentel PEN S / XL

permanent ink, resistant to many types of solvent – good ink coverage even on oily, wet or dirty surfaces · durable, sturdy tip – keeps its shape for a long time without fraying, perfect for use in harsh environments · waterproof · model with extra-wide writing tip for highly visible, large-scale marking jobs, plus model with extra-fine tip for high-precision marking · robust aluminium barrel also suitable for use in production machines · the no-nonsense pen for tough jobs · usable on almost any surface, including glass, metal, wood and plastics · available in 4 colours · 3.0 mm bullet tip N50S gives approx. a 1.0 mm line width · 8.0/15 mm chisel tip N50XL gives approx. a 7.0/17.0 mm line width · article number: N50S/N50XL

blister item code:
N50S-PRO4ABCEU



writing colours XL: ● S: ● ● ●

The Pentel Pen permanent markers are high-quality all-rounders and handy day-to-day helpers for a wide range of marking and labelling tasks. The rugged marker tips are extremely hard-wearing and robust, even when used on rough surfaces. The sturdy aluminium barrel is strong enough to be clamped in machine tools.

Thanks to these features, the robust and long-lasting Pentel Pen is the perfect choice for all jobs where high performance and reliability are required.

The Pentel Pen S permanent marker features an extra-fine bullet tip, making it ideal for the precise marking and labelling of parts with a fine line width – whether in skilled trades or for DIY and hobby projects.

The Pentel Pen XL permanent marker is equipped with an extra-wide chisel tip that is perfect for any job where marking needs to cover a large area and be especially easy to see. Applications for the Pentel Pen XL include permanent marking and labelling on signs and felled or stored timber, as well as highly visible marking work in warehousing and logistics operations.

The permanent ink used in both the Pentel Pen S and Pentel Pen XL is fast-drying, waterproof, and resistant to many solvents and oils. The ink is ideal for use even on oily, dusty, wet or dirty surfaces, as well as on a wide range of materials that include glass, metal, wood and plastics.

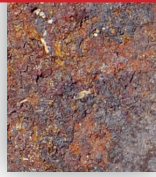


blister item code:
N50XL-PRO1AEU

for harsh environments in industry and crafts

PenTools
by Pentel





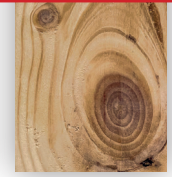
OILY, ROUGH SURFACES



RUBBER



STONE

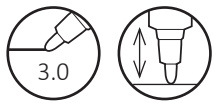


WOOD

PERMANENT PAINT MARKER

WHITE 100W

paint ink, permanent, white pigment-based and high opacity · quick-drying, waterproof even on oily, wet, dusty or greasy surfaces · lightfast and resistant to many solvents · rugged and compact aluminium barrel · ideal for use in production machines · 6.6 mm bullet tip gives approx. a 3.0 mm line width · article number: X100W



writing colour:

The compact Pentel white X100W paint marker features a permanent ink that is fast-drying and does not dissolve. This high-opacity and high-visibility white ink means the marker can be used even on oily, wet or dirty surfaces. Developed specially for industrial use, this pigmented ink is smudge-proof, waterproof, lightfast and resistant to many types of solvent, making it perfect for permanent marking.

Thanks to these properties, the marker is a reliable choice for quick marking tasks on a wide variety of non-porous surfaces.

With its rugged, wide-body aluminium barrel, the marker is noticeably shorter and thicker than other markers. With this extra-shortened format, the marker is easy to grip with bulky work gloves or in a closed fist and usable even in hard-to-reach areas. It's also easy to tuck away in any trouser or jacket pocket. The barrel is sturdy enough to be held in machine tools without buckling. Together, these properties extend the marker's lifetime, making it a handy and indispensable tool for use in construction, skilled trades or industrial applications.



blister item code:
X100W-PRO1EU

permanent also on oily, rusty surfaces

PenTools

by Pentel



20 + 15 = 35
19 + 17 = 36
18 + 16 = 34



GLASS



CHALKBOARD



CERAMIC

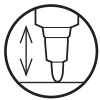


PLASTIC

GLASS-MARKER

WET ERASE

ink produces a liquid chalk-like effect on application · for use on any smooth and sealed surface · pigmented, high-opacity ink · low-odour · water-based · for temporary marking · wipes clean with wet cloths on smooth surfaces · reversible bullet or chisel tip · **made from 84% recycled materials** · 4.6 mm chisel tip gives approx. a 1.5/4.0 mm line width · article number: SMW26



writing colours: ● ● ● ●

The Pentel Liquid Glass and Chalk Marker is a wet erase marker for use on any smooth and sealed surface. After pumping the pen to prime it, the liquid ink inside can be used to write on most glass surfaces and other smooth surfaces, such as mirrors, or conventional slate boards. After application, the high-opacity, water-based ink produces an effect similar to liquid chalk, which allows special effects to be created by the user.

Once dry, the ink is weatherproof on glass. The Wet Erase is a marker for temporary marking and can be removed without leaving any residue.











The Pentel Liquid Glass and Chalk Marker has two tip styles in one, each end featuring a tough fibre tip: by simply flipping the tip around, the bullet tip can be switched over to a chisel tip. Ideal for use on glass (e.g. for car showrooms or glass repair services), for customer announcements and decorative applications in retail (e.g. shop window use), in hotels and restaurants (e.g. menu boards) and home projects (e.g. creative work on windows or glass objects).

Important: Please note that marker residues may be left on blackboard foils and painted MDF surfaces. The marker may leave permanent marks on surfaces that are porous or not fully sealed. Always test first on an inconspicuous surfaces.



blister item code:
SMW26-PRO4MX1EU

erasable with damp cloth

-  = line width definition
-  = product is refillable
-  = made with recycled material
-  = waterproof
-  = lightfast
-  = quick-drying
-  = low-odour
-  = with pump function
-  = aluminum barrel
-  = permanent

Please note:

- the Pentel PenTools range is constantly evolving.
Pentel therefore expressly reserve the right to make product and/or program changes without prior notice.
- we assume no liability for any typographical errors.

PenTools

||||| by **Pentel**



www.pentel-pentools.eu

Pentel

Pentel GmbH
Lademannbogen 143
D-22339 Hamburg
Phone: +49 (0)40 5380910

Importer Bulgaria
Barin Bulgaria Ltd.,
Kuklenasko Shoshe 6-A, Plovdiv

Phone: +359 (0)700 13 993
contact@barin.bg

www.pentel.bg

Printed: 04/2022

PM/CAT-PENTTOOLS-E



4 016284 346754